



**For ASME Application Computerized Data will be provided**

For ASME Certified Units

Email form to: sales@aihti.com or engineering@aihti.com or fax to 434-757-1810

Contact Name \_\_\_\_\_ Telephone \_\_\_\_\_ Date \_\_\_\_\_

Company Name \_\_\_\_\_ Email \_\_\_\_\_

Address: \_\_\_\_\_ Fax \_\_\_\_\_

**Hot Side**

**Cold Side**

Fluid Type \_\_\_\_\_

Fluid Type \_\_\_\_\_

Density \_\_\_\_\_ lb/ft<sup>3</sup>

Density \_\_\_\_\_ lb/ft<sup>3</sup>

Viscosity \_\_\_\_\_ cP

Viscosity \_\_\_\_\_ cP

If available:

Conductivity \_\_\_\_\_ Btu/hr.ft.°F

If available:

Conductivity \_\_\_\_\_ Btu/hr.ft.°F

Specific Heat \_\_\_\_\_ Btu/lb.°F

Specific Heat \_\_\_\_\_ Btu/lb.°F

1. Flow Rate \_\_\_\_\_

1. Flow Rate \_\_\_\_\_

2. Temperature In \_\_\_\_\_

2. Temperature In \_\_\_\_\_

3. Desired Temperature Out \_\_\_\_\_

Maximum Allowable Pressure Drop:

4. Heat Load \_\_\_\_\_

Hot Side \_\_\_\_\_ Cold Side \_\_\_\_\_

To properly size the heat exchanger we need 3 of the 4 parameter on the Hot Side and 2 on the Cold Side.

Fixed Tube Bundle  Removable Tube Bundle  U-Tube Fixed Tube Bundle  U-Tube Removable Tube Bundle

Shell Material Construction:

Steel  Stainless Steel

Tube Sheet Material

Steel  Stainless Steel

Brass  (Applies to removable bundle only)

Tube Material Construction:

Copper   
 90/10 Copper Nickel   
 Stainless Steel

End Bonnets Material:

Steel   
 Stainless Steel

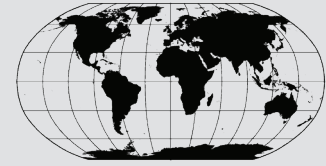
Require All Stainless Steel Heat Exchanger Yes  No

Comment: \_\_\_\_\_

# **American Industrial**

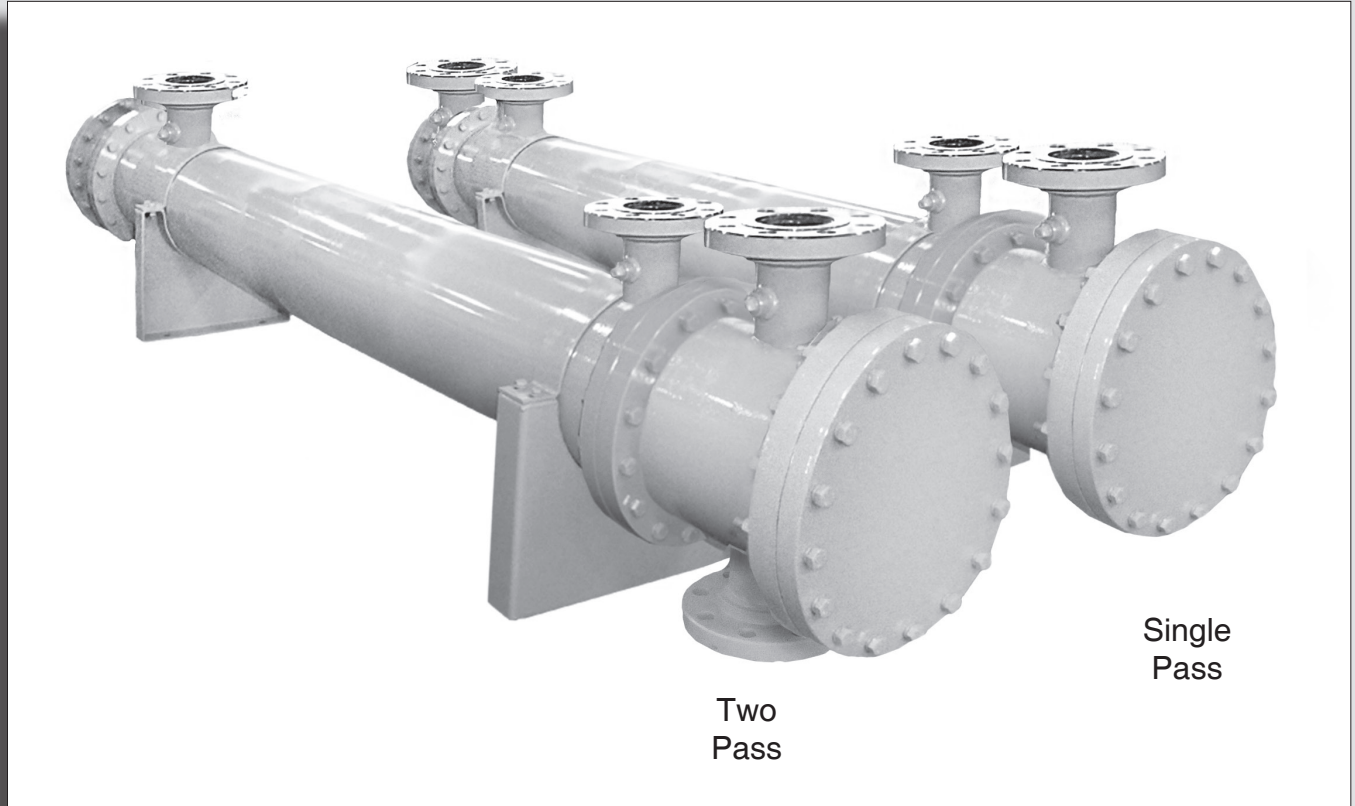
## **Heat Transfer Inc.**

**Manufacturer of Quality Heat Exchangers**



[www.aihti.com](http://www.aihti.com)

**ASME CERTIFIED UNITS**



**ASME CERTIFIED**

## **HEAT EXCHANGERS**

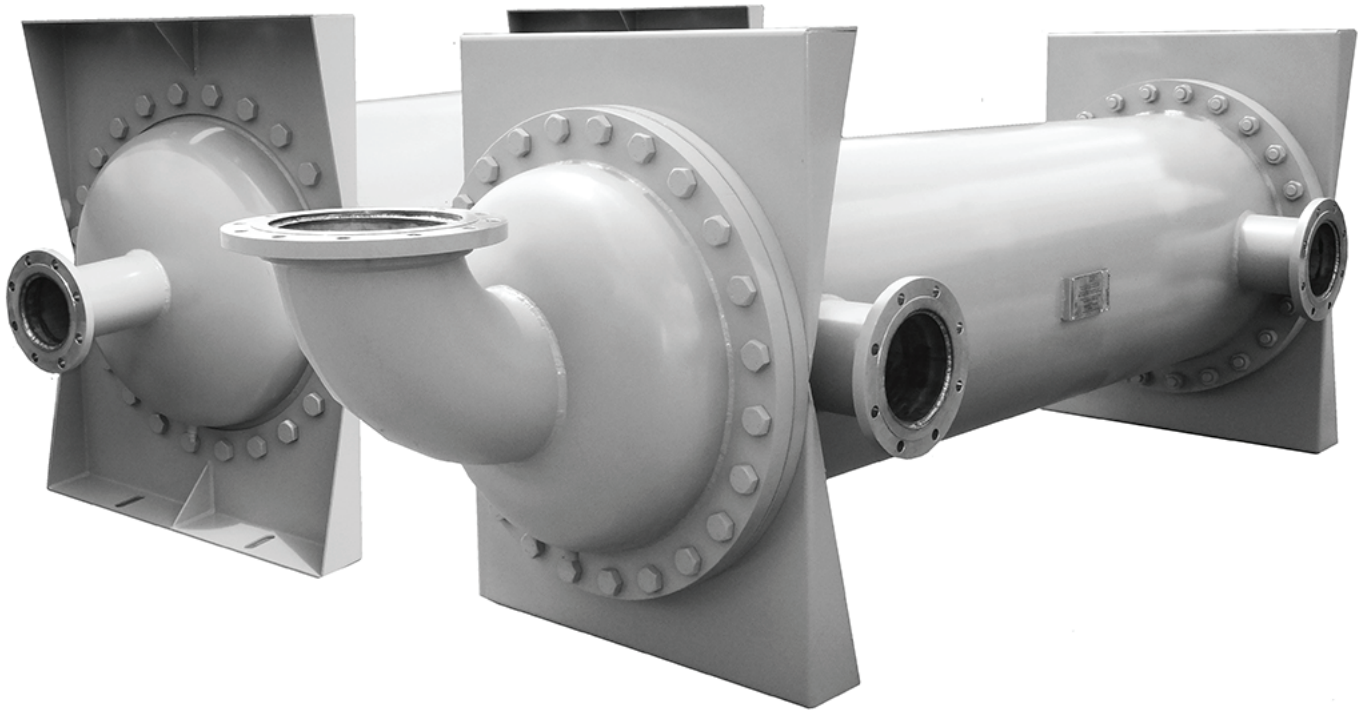
At American Industrial we manufacture various sizes of heat exchangers, from 5 inch to 50 inches diameter and larger if needed. The length can range from 20 inches to 40 feet long. Heat exchangers can be manufactured in a variety of materials to meet customer requirements with ASME code and certified.

Since we manufacture all components in our facility, we can meet the quality and delivery our customers require.

We can duplicate any existing heat exchanger from a drawing, free-hand sketch, or by sending the actual physical unit to our facility. We will guarantee to meet material construction, dimensions, and performance of the unit.

You may contact:

Engineering department: 434-757-1800 • 847-731-1000  
[engineering@aihti.com](mailto:engineering@aihti.com) • [sales@aihti.com](mailto:sales@aihti.com)



Sample of Shell and Tube

---



Sample of air and liquid

